

  
**GentleCath™ Glide**  
*that's a relief*

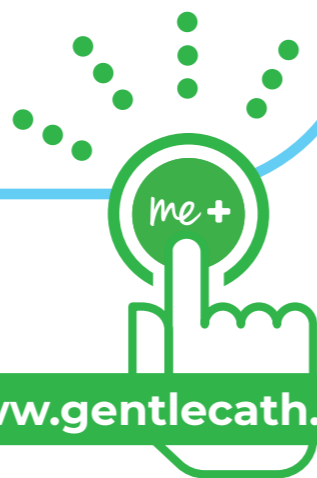
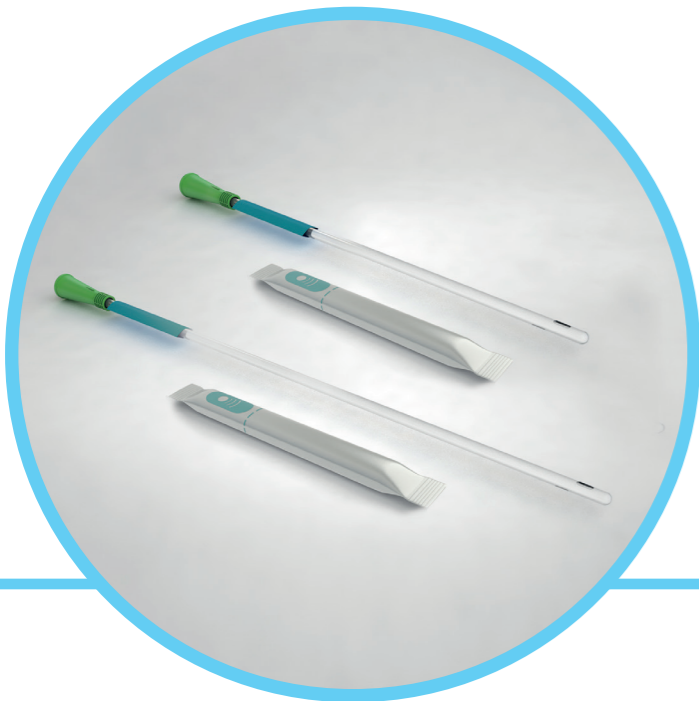
Designed for fast\* and convenient cathing

\* No additional waiting time once the catheter has been wetted

# GentleCath™

## Peace of mind for you and your users

For some people, starting intermittent catheterisation – or ‘cathing’ – can be a cause of concern and anxiety. The GentleCath™ product range and support tools are designed to make this transition as smooth as possible, at every stage.



[www.gentlecath.com/uk](http://www.gentlecath.com/uk)

### GentleCath™ me+™

GentleCath™ me+™ is a service designed to provide users with everything they need to gain relief from the worries associated with cathing.

**Personalised instructions:** users can find customised instructions on how to use GentleCath™ Glide on the GentleCath™ me+™ website.



### Introducing GentleCath™ Glide

As leaders in continence care for over 30 years, we are constantly looking for ways to improve our users' experience.

GentleCath™ Glide is designed to make cathing as simple and convenient as possible.

#### Smooth, slippery surface

**Feature: a low friction hydrophilic catheter**

The smooth, slippery surface is designed to make cathing easier.

#### Residuals reduction

**Feature: FeelClean™ technology**

The catheter is made with our unique technology designed to reduce the residuals and mess left behind by cathing, so users can worry less about getting residue on their clothes, hands and body.

#### Catheter contamination prevention

**Feature: a no-touch sleeve**

GentleCath™ Glide has a no-touch handling sleeve to help prevent contamination of the catheter with bacteria from the hands.<sup>1,2</sup>

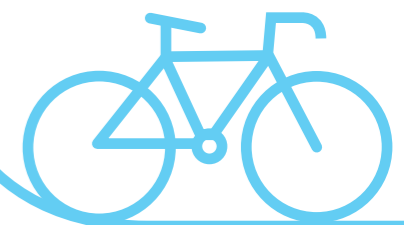
#### Speed and discretion

**Feature: quick lubrication**

GentleCath™ Glide is ready to use with no unnecessary delay. Users can start cathing as soon as they break the water sachet and wet the length of the catheter – so it can be used quickly and discretely.

#### Not made with DEHP

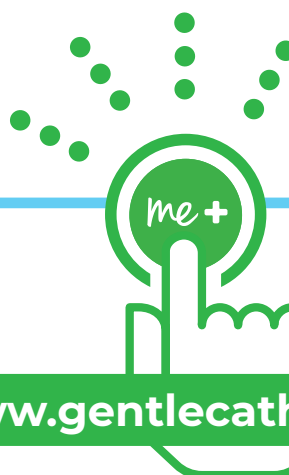
The GentleCath™ Glide catheter is made without the use of DEHP.\*



*User experience and concerns are at the heart of our product design, and always will be.*

\*DEHP (di(2-ethylhexyl)phthalate) is used to soften PVC plastic and is suspected to reduce fertility.

# We've always got time to talk



Call us on freephone **0800 587 7560**,  
Monday–Friday (excluding Bank  
Holidays), 9am–5pm

Our dedicated me+™ team are  
on hand with answers, advice  
and information – or simply  
for a reassuring chat.

[www.gentlecath.com/uk](http://www.gentlecath.com/uk)

**Professional advice:**  
our online video FAQ may  
help to answer some of your  
users' questions and concerns.



## Available product range

Version	French Size	Quantity Per Unit	Order Code
<b>Male Straight Tip</b>	08	30	421564
	10	30	421565
	12	30	421566
	14	30	421567
	16	30	421568
	18	30	421569
<b>Male Tiemann Tip</b>	08	30	421907
	10	30	421908
	12	30	421909
	14	30	421910
	16	30	421911
	18	30	421912
<b>Female Straight Tip</b>	08	30	421570
	10	30	421571
	12	30	421572
	14	30	421573
	16	30	421574

**References:** 1. Hudson E. & Murahata R.I. The 'no-touch' method of intermittent urinary catheter insertion: can it reduce the risk of bacteria entering the bladder? *Spinal Cord* 2005;43(10):611–614. 2. Charbonneau-Smith R. No-touch catheterisation and infection rates in a select spinal cord injured population. *Rehabilitation Nursing* 1993;18(5):296–299, 305.

**GentleCath™ Glide**  
*that's a relief*